



DDOT
Kathleen Penney
Ballpark Traffic Issues



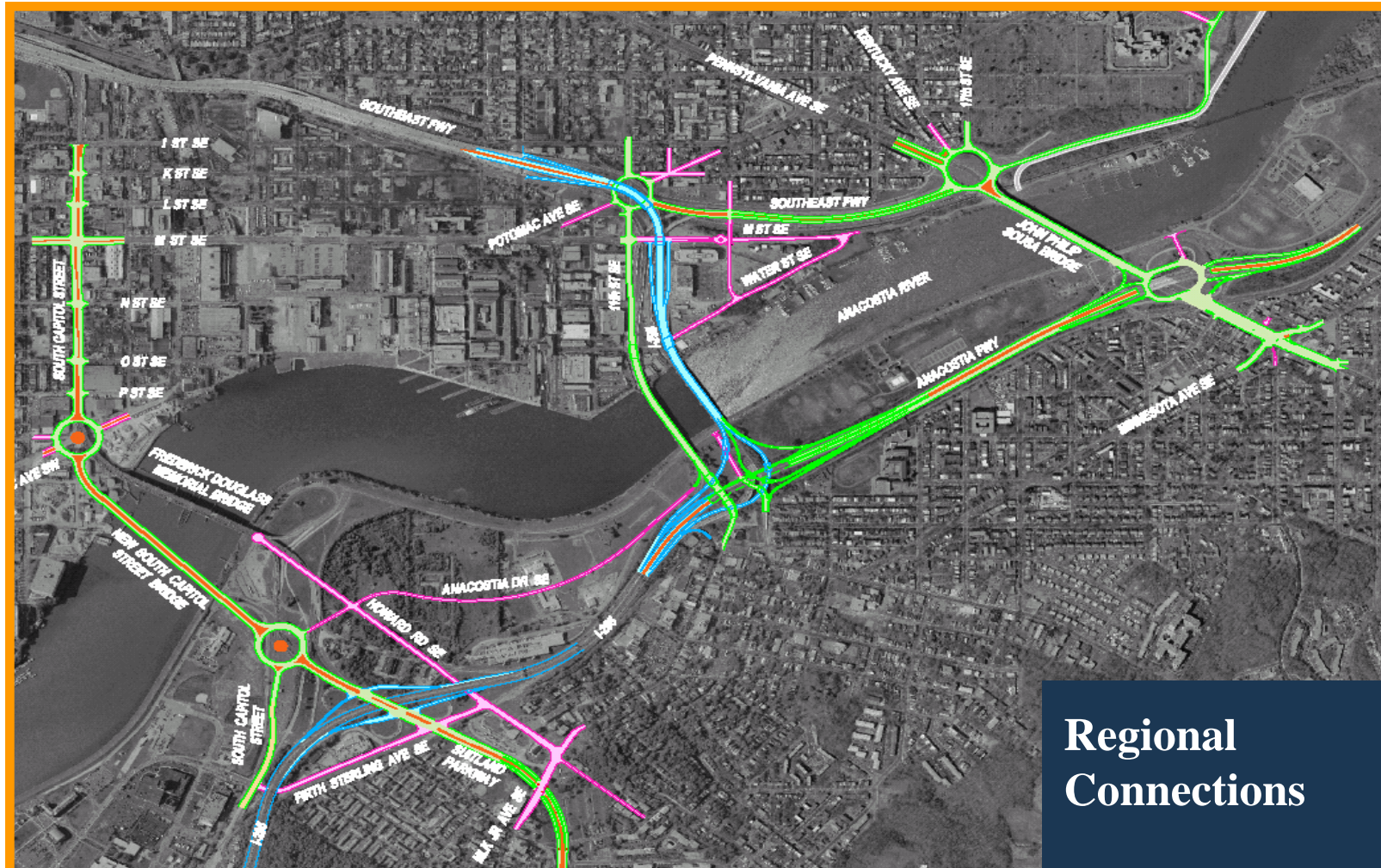
DDOT Traffic Studies

- AWI Transportation Mobility Study
- Anacostia Access Study Baseball Addendum
- Maintenance of Traffic (MOT) Plans for Douglass Bridge Rehabilitation
- Traffic Planning for 2-month Bridge Closure





Regional Connections



Regional
Connections



11th St. Bridge EIS



	FY 2005	FY 2006	FY 2007	FY 2008	FY 2009	FY 2010
NEPA						
Bridge Rehab						
RFK Ramp Demolition						
MLK Ave Improvements						
Design Type Size Location						
Accelerated Design-construction						

11th STREET BRIDGES ENVIRONMENTAL IMPACT STATEMENT
COMMUNITY UPDATE
Issue No. 1 - January 2008

News & Events

- Alternatives are being revised
- Class Dismiss Public Information Meeting for slower lanes
- Speakers are still available for community meetings

11TH STREET BRIDGES ENVIRONMENTAL IMPACT STATEMENT

DOT and the Federal Highway Administration (FHWA) are preparing an EIS to examine the potential environmental and social impacts of reconstructing the 11th Street Bridges. The Draft EIS will be released for public comment in spring 2008, and the Final EIS is expected to be released in summer 2009, after public and agency comments on the Draft EIS have been thoroughly considered. Both versions of the EIS will be available on the project website and in public libraries throughout the study area.

Timeline:

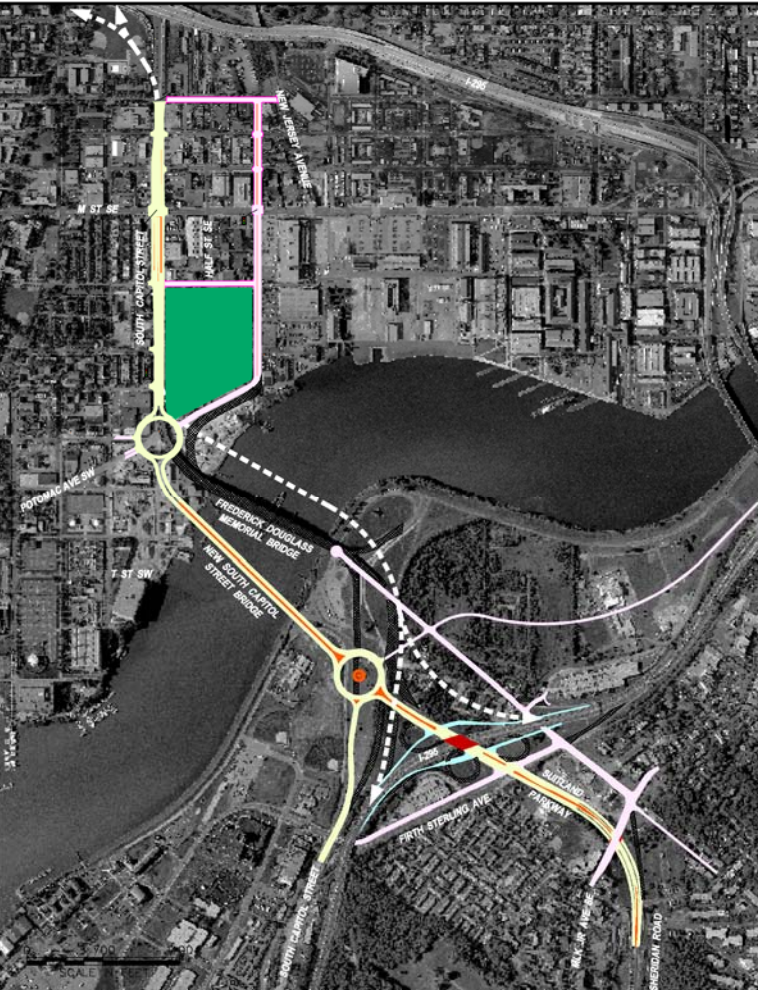
- 2005: NEPA, Design, Construction
- 2006: Design, Construction
- 2007: Design, Construction
- 2008: Design, Construction
- 2009: Design, Construction
- 2010: Design, Construction

d.





Studies Available Online



South Capitol Gateway and Corridor Study Final Report

(<http://ddot.dc.gov/ddot/cwp/view,a,1247,q,560731.asp>)

Anacostia Access Final Report

(<http://ddot.dc.gov/ddot/cwp/view,a,1249,q,620007.asp>)

South Capitol St. EIS Website

(<http://www.southcapitoleis.com/>)

Frederick Douglass Memorial Bridge Alignment Study Website

(<http://www.southcapitolstreetbridgestudy.com/>)



Anacostia Waterfront Initiative





South Capitol Street Gateway: Vision



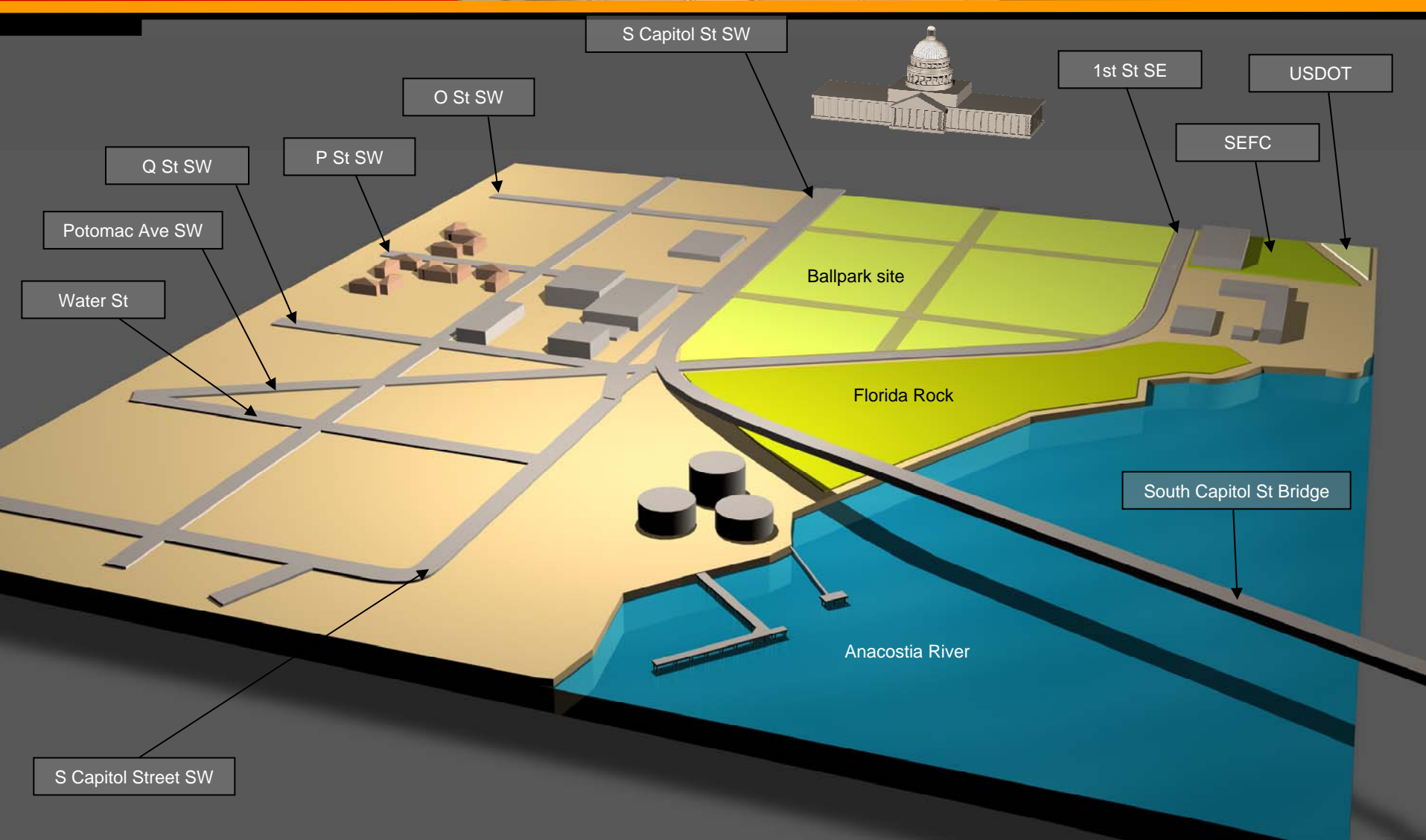
- Grand Urban Boulevard
- New Frederick Douglass Memorial Bridge
- New interchanges





Near Southeast/Southwest Developments







New Business Resource Centers

- The newly organized Business Resource Centers (BRC) are located in Wards 6 and 8, east and west of the Anacostia River.

The BRC's will provide all citizens of the District with easy access to Pre-Apprentice, Apprenticeship and trade job opportunities related to upcoming DDOT and AWC construction projects.

To maximize the District's resources, DDOT has partnered with the Anacostia Waterfront Corporation (AWC), DC Department of Employment Services (DOES), and the Earth Conservation Corps (ECC) in creating the centers structures.

FROM THE CENTERS :

- **AWC** will be able to provide information on development projects and Anacostia River restoration efforts, internships, project job opportunities or apprenticeships.
- **DDOT** will be able to manage their local projects:
 - Martin Luther King Jr Avenue SE 2-way conversion
 - 11th Street Bridge Project
 - South Capitol Street Projects
- **DOES will be able to** coordinate hiring efforts for DDOT's projects.
- **DOES will be able to** coordinate hiring efforts for AWC projects.



Additional Information



Achieving the South Capitol Gateway Vision





Leveraging investments for economic gain





Access to New Workplaces





Providing a detour for construction of the new bridge





Mitigating Impacts to Commuters

- Incentive to contractors to accelerate construction
- Improved detours
- Construction during low traffic months
- Extensive Public outreach
- Transit incentives





National Trend: Condensed Work Period

- Similar strategies in Detroit, Columbus, and Wilmington, DE
- Reduces traffic impacts significantly
- Reduces impacts to adjacent community
- Reduces project time
- Improves safety for everyone
- Improves construction quality (fewer joints and seams)
- Realize benefits sooner



Impacts to the Local Community

- Condensed work period
- “Get in, Get out”





DDOT Mitigation Plan

Mitigation Measure	
Work during lowest traffic months (July and August)	
Anacostia Metrorail Station parking garage	
RFK surface parking w/ shuttle service	
MTA and commuter bus service	
Metrorail – new cars on green line summer of 2007	



Re-Routing Traffic

