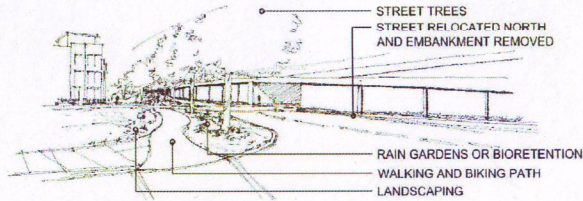
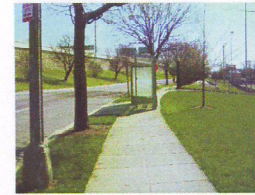


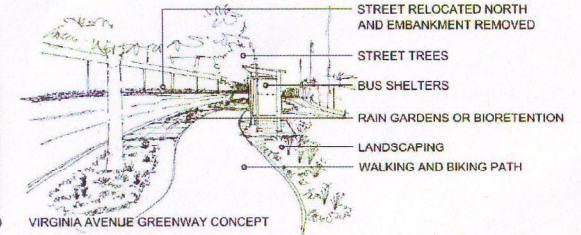
TYPICAL EXISTING VIRGINIA AVENUE (LOOKING WEST)



VIRGINIA AVENUE GREENWAY CONCEPT



TYPICAL EXISTING VIRGINIA AVE (LOOKING EAST)



VIRGINIA AVENUE GREENWAY CONCEPT

- EXISTING
- UNDER CONSTRUCTION
- PLANNED
- PARKS & OPEN SPACE

ENHANCED CONNECTION TO GARFIELD PARK

- IMPLEMENT THE GARFIELD PARK PLAN
- SKATE PARK
- BASKETBALL
- ACCESSIBLE CONNECTION
- LIGHTING

ENHANCED UNDERPASS ENVIRONMENT AND CROSS-NEIGHBORHOOD CONNECTIONS

- PEDESTRIAN SCALE LIGHTING
- DECORATIVE PAVEMENT
- AMENITIES SUCH AS BENCHES AND RETAIL KIOSKS

RELOCATE VIRGINIA AVENUE TO CREATE SPACE FOR A GREENWAY

- WALKING AND BIKING PATH
- BENCHES, TRASH CANS BUS SHELTERS
- RAIN GARDENS OR BIORETENTION
- PERVIOUS PAVEMENT
- STREET TREES
- PARALLEL PARKING
- PEDESTRIAN SCALE LIGHTING

FUTURE EXPANSION OF VIRGINIA AVENUE PARK

- DOG PARK
- EXPANDED COMMUNITY GARDEN
- FARMERS MARKET
- COMMUNITY ORCHARD
- PLAYGROUND

FUTURE GREENWAY CONNECTION TO RIVER WALK AND TRAIL



FUTURE 2ND STREET PEDESTRIAN CONNECTION BETWEEN GARFIELD PARK AND CANAL PARK

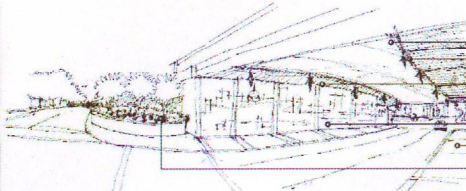
8TH STREET UNDERPASS IS AN EXAMPLE OF AN ENHANCED NEIGHBORHOOD CONNECTION ENVIRONMENT FOR THE OTHER UNDERPASSES

- PEDESTRIAN SCALE LIGHTING
- UPGRADED PAVEMENT

DRAFT
APRIL 12, 2010



TYPICAL EXISTING UNDERPASS

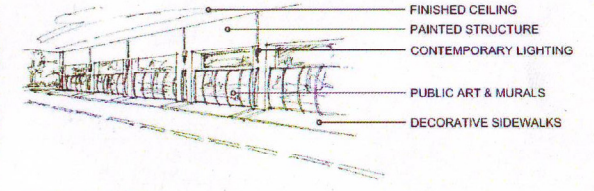


UNDERPASS CONCEPT

- FINISHED CEILING
- CONTEMPORARY LIGHTING
- PAINTED STRUCTURE
- PUBLIC ART & MURALS
- DECORATIVE SIDEWALKS
- LANDSCAPING



TYPICAL EXISTING UNDERPASS



UNDERPASS CONCEPT

- FINISHED CEILING
- PAINTED STRUCTURE
- CONTEMPORARY LIGHTING
- PUBLIC ART & MURALS
- DECORATIVE SIDEWALKS